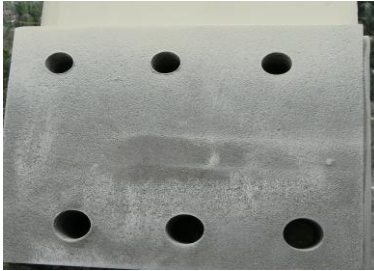




## Montana rotorblades

1]

- **Do not** look to the shape of the rotorblades
- Each rotorblade has 6 holes on the footend



2]

- The rotorhub (2 blue steel plates) have 2 times 3 holes for each rotorblade
- See picture below:



- The 3 holes on the outside of the rotorhub is to connect the rotorblades to the rotorhub

3]

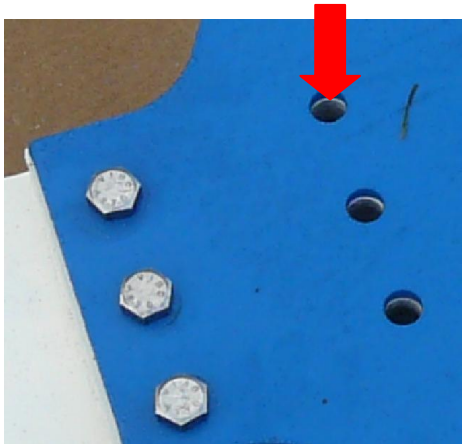
- The 3 holes on the inside of the blueplate is to connect the assembled rotorblades with rotorhub to the threaded bolts on the generator



Threaded bolts on generator (for rotorblades Airfoil E387)

#### 4) Important:

- If you place a rotorblade on the blue plate, all 6 holes (of footend) must be visible and available!
- **If not, turn the rotorblade 180° See red arrow on picture below for holes**
- There is only ONE possibility to place the blade on the rotorhub to connect the 6 bolts & nuts
- The shape of the rotorblade is automatically oriented in the right direction.



#### 5) Important:

Mounting the rotorhub on generator: (see also page 11 & 12 of the manual)

- you need two Norlock washers and a nut for connection
- 2 Place the Norlock washers in right position (fig.1) to secure bolted joints with tension instead of friction



Fig. 1





**6] Important:**

Torque for bolt and nut:



See chapter 7.1 Torque specifications on page 22!!

**7] Important:**

Before lifting the wind turbine:

- Take care before lifting the wind turbine: **right position** of the tail!
- If not, the tail could smash into the opposite direction during lifting by crane with damage as a result



Note: Take care of the right position of the tail vane on the tail frame!